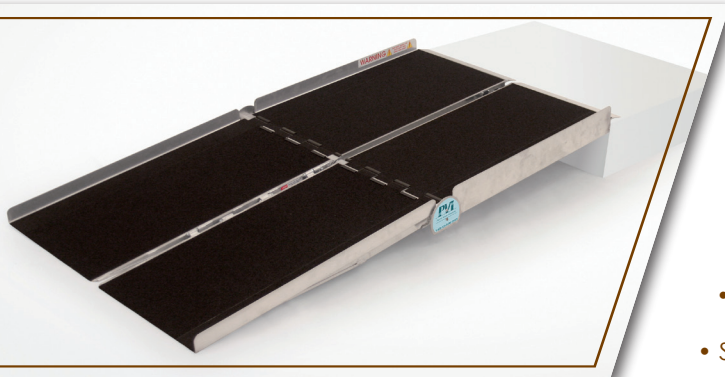


BARIATRIC MULTIFOLD



- Separates into two pieces for easy carrying
- Patented center joint hinge eliminates pinch point and adds strength
- Folds, carries like a suitcase
- Safety guide indicates if ramp is on a safe slope
- Closure strap locks ramp panels together
- Anti-slip high traction surface
- Durable welded construction
- Accommodates wheelchairs and scooters with various wheel configurations
- Safety DVD and steel security pins included

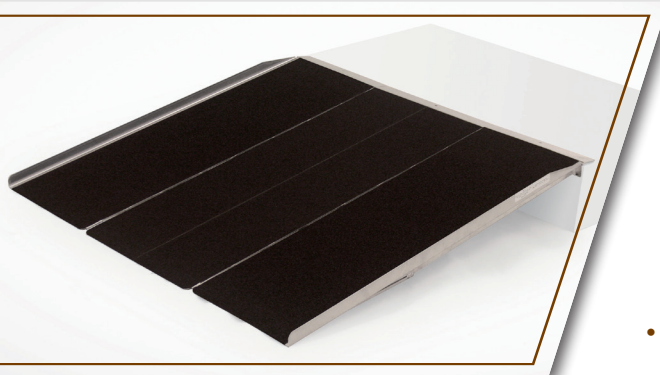
LIMITED **LIFETIME WARRANTY**

Item Number	Length	Width	Folded Size	Weight	Capacity*
BAR536	5'	36"	32¼" x 17½" x 11½"	50 lbs.	800 lbs.
BAR636	6'	36"	38¼" x 17½" x 11½"	58 lbs.	800 lbs.
BAR736	7'	36"	44¼" x 17½" x 11½"	67 lbs.	800 lbs.
BAR836	8'	36"	50¼" x 17½" x 11½"	76 lbs.	800 lbs.

* Maximum ramp capacity: 400 lbs. (one axle) – 800 lbs. (two axles).

BARIATRIC PANEL

LIMITED **LIFETIME WARRANTY**



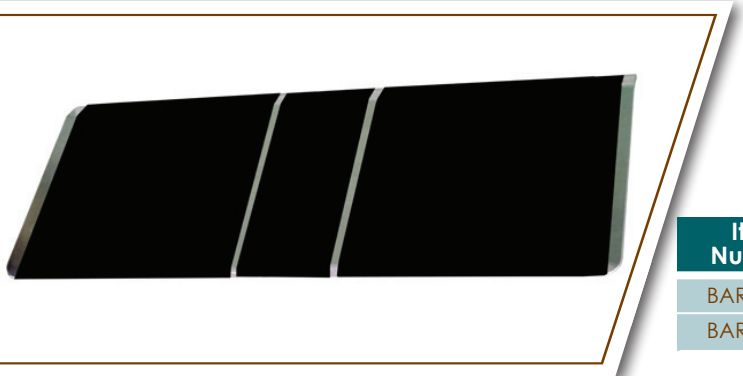
- Three interlocking lightweight ramp sections
- Additional panels used to increase ramp widths
- Outside panels feature 1.5" curbing
- Anti-slip high traction surface
- Durable welded construction
- Safety DVD and steel security pins included
- Accommodates wheelchairs and scooters with various wheel configurations

Item Number	Length	Width	Weight	Capacity*	Item Number	Length	Width	Weight
BPR348	3'	47¼"	24 lbs.	800 lbs.	BPRS317	3'	17⅞"	9 lbs.
BPR448	4'	47¼"	32 lbs.	800 lbs.	BPRS417	4'	17⅞"	12 lbs.
BPR548	5'	47¼"	46 lbs.	800 lbs.	BPRS517	5'	17⅞"	17 lbs.
BPR648	6'	47¼"	56 lbs.	800 lbs.	BPRS617	6'	17⅞"	21 lbs.

* Maximum ramp capacity: 400 lbs. (one axle) – 800 lbs. (two axles)

BARIATRIC THRESHOLD

LIMITED **LIFETIME WARRANTY**



- Designed for doorways
- Holes punched in top corners for easy installation
- Lightweight, durable aluminum
- Anti-slip, high traction surface
- Hardware provided to secure ramp to surface

Item Number	Length	Width	Threshold Height	Weight	Capacity*
BAR1636	16"	36"	1½" - 2"	12 lbs.	800 lbs.
BAR2436	24"	36"	2" - 4"	21 lbs.	800 lbs.

* Maximum ramp capacity: 400 lbs. (one axle) – 800 lbs. (two axles).